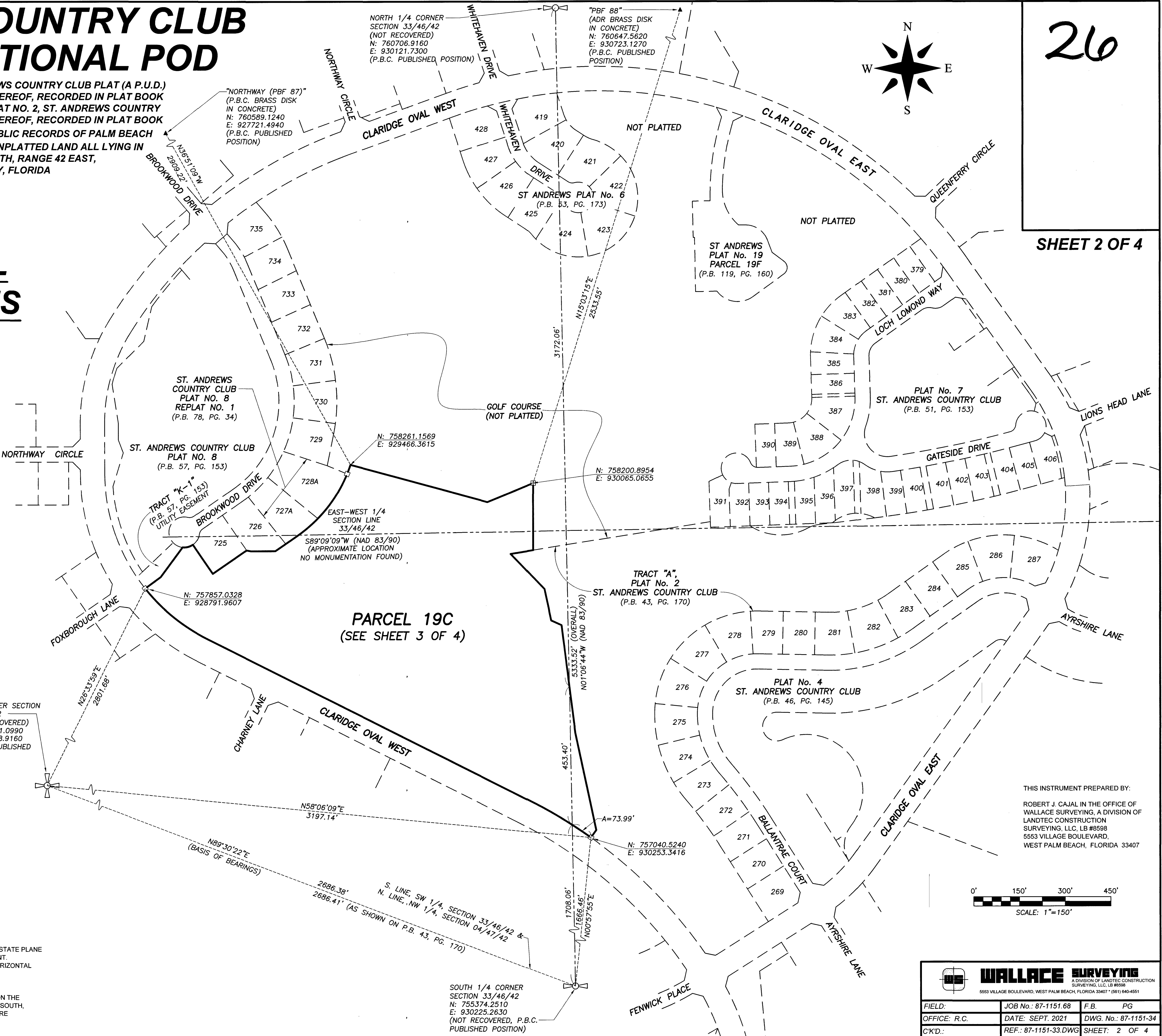
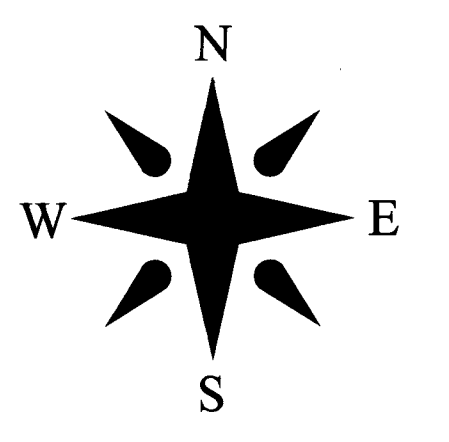


ST. ANDREWS COUNTRY CLUB (A P.U.D.) RECREATIONAL POD

BEING A REPLAT OF PARCEL 19B, ST. ANDREWS COUNTRY CLUB PLAT (A P.U.D.) REPLAT NO. 19, ACCORDING TO THE PLAT THEREOF, RECORDED IN PLAT BOOK 119, PAGE 160, A PORTION OF TRACT "C", PLAT NO. 2, ST. ANDREWS COUNTRY CLUB (A P.U.D.) ACCORDING TO THE PLAT THEREOF, RECORDED IN PLAT BOOK 43, PAGE 170, BOTH RECORDED IN THE PUBLIC RECORDS OF PALM BEACH COUNTY, FLORIDA, AND A PORTION OF UNPLATTED LAND ALL LYING IN SECTION 33, TOWNSHIP 46 SOUTH, RANGE 42 EAST, PALM BEACH COUNTY, FLORIDA

KEY MAP & HORIZONTAL CONTROL TIES

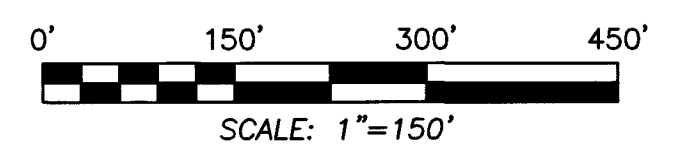


ABBREVIATIONS AND SYMBOLS

- = FOUND 4"x4" CONCRETE MONUMENT WITH DISK STAMPED "P.R.M. LB #4569"
- = 4"x4" CONCRETE MONUMENT FOUND (AS NOTED ON MAP)
- ⊕ = SET 4"x4" CONCRETE MONUMENT WITH DISK STAMPED "P.R.M. LB #4569"
- ⊙ = FOUND MAG NAIL & DISK STAMPED "P.R.M. LB #4569"
- ⊗ = SET MAG NAIL & DISK STAMPED "P.R.M. LB #4569"
- Δ = CENTRAL ANGLE
- 33/46/42 = SECTION 33, TOWNSHIP 46 SOUTH, RANGE 42 EAST
- N: = NORTHING (WHEN USED WITH A COORDINATE)
- E: = EASTING (WHEN USED WITH A COORDINATE)
- A = ARC LENGTH
- C, C/L = CENTERLINE
- CATV = COMMUNITY ANTENNA (ACCESS) TELEVISION
- C.D. = CHORD DISTANCE
- L.A.E. = LIMITED ACCESS EASEMENT
- LB = LICENSED BUSINESS
- NAD = NORTH AMERICAN DATUM
- (N.R.) = NON-RADIAL
- N.T. = NON-TANGENT
- O.R.B. = OFFICIAL RECORDS BOOK
- O/S = OFFSET
- P.B.C. = PALM BEACH COUNTY
- P.B. = PLAT BOOK
- P.C. = POINT OF CURVATURE
- PG(S) = PAGE(S)
- P.O.B. = POINT OF BEGINNING
- P.R.M. = PERMANENT REFERENCE MONUMENT
- P.U.D. = PLANNED UNIT DEVELOPMENT
- P.T. = POINT OF TANGENCY
- R = RADIUS
- (R.B.) = RADIAL BEARING
- RGE. = RANGE
- R/W = RIGHT-OF-WAY
- SEC. = SECTION
- TWP. = TOWNSHIP
- U.E. = UTILITY EASEMENT

STATE PLANE COORDINATES NOTES:

1. COORDINATES SHOWN ARE GRID.
2. DATUM = NAD 83, 1990 ADJUSTMENT.
3. ZONE = FLORIDA EAST
4. LINEAR UNIT = U.S. SURVEY FOOT
5. COORDINATES SHOWN ON THE CONTROL P.R.M.'S ARE BASED UPON THE FLORIDA STATE PLANE COORDINATE SYSTEM ON THE NORTH AMERICAN DATUM OF 1983, 1990 ADJUSTMENT.
6. ALL DISTANCES ARE GROUND UNLESS LABELED OTHERWISE AS MEASURED ON HORIZONTAL PLANE.
7. SCALE FACTOR = 1.0000273
8. GROUND DISTANCE X SCALE FACTOR = GRID DISTANCE
9. BEARINGS SHOWN HEREON ARE GRID (NAD 83/90 ADJUSTMENT) AND ARE BASED ON THE SOUTH LINE OF THE SOUTHWEST QUARTER (SW 1/4) OF SECTION 33, TOWNSHIP 46 SOUTH, RANGE 42 EAST, WHICH BEARS NORTH 89°30'22" EAST AND ALL OTHER BEARINGS ARE RELATIVE THERETO, UNLESS OTHERWISE LABELED.



THIS INSTRUMENT PREPARED BY:
ROBERT J. CAJAL IN THE OFFICE OF
WALLACE SURVEYING, A DIVISION OF
LANDTEC CONSTRUCTION
SURVEYING, LLC, LB #6598
5553 VILLAGE BOULEVARD,
WEST PALM BEACH, FLORIDA 33407

WALLACE SURVEYING
A DIVISION OF LANDTEC CONSTRUCTION SURVEYING, LLC, LB #6598
5553 VILLAGE BOULEVARD, WEST PALM BEACH, FLORIDA 33407 (561) 640-4551

FIELD:	JOB No.: 87-1151.68	F.B.	PG
OFFICE: R.C.	DATE: SEPT. 2021	DWG. No.:	87-1151-34
C'K'D.:	REF.: 87-1151-33.DWG	SHEET:	2 OF 4